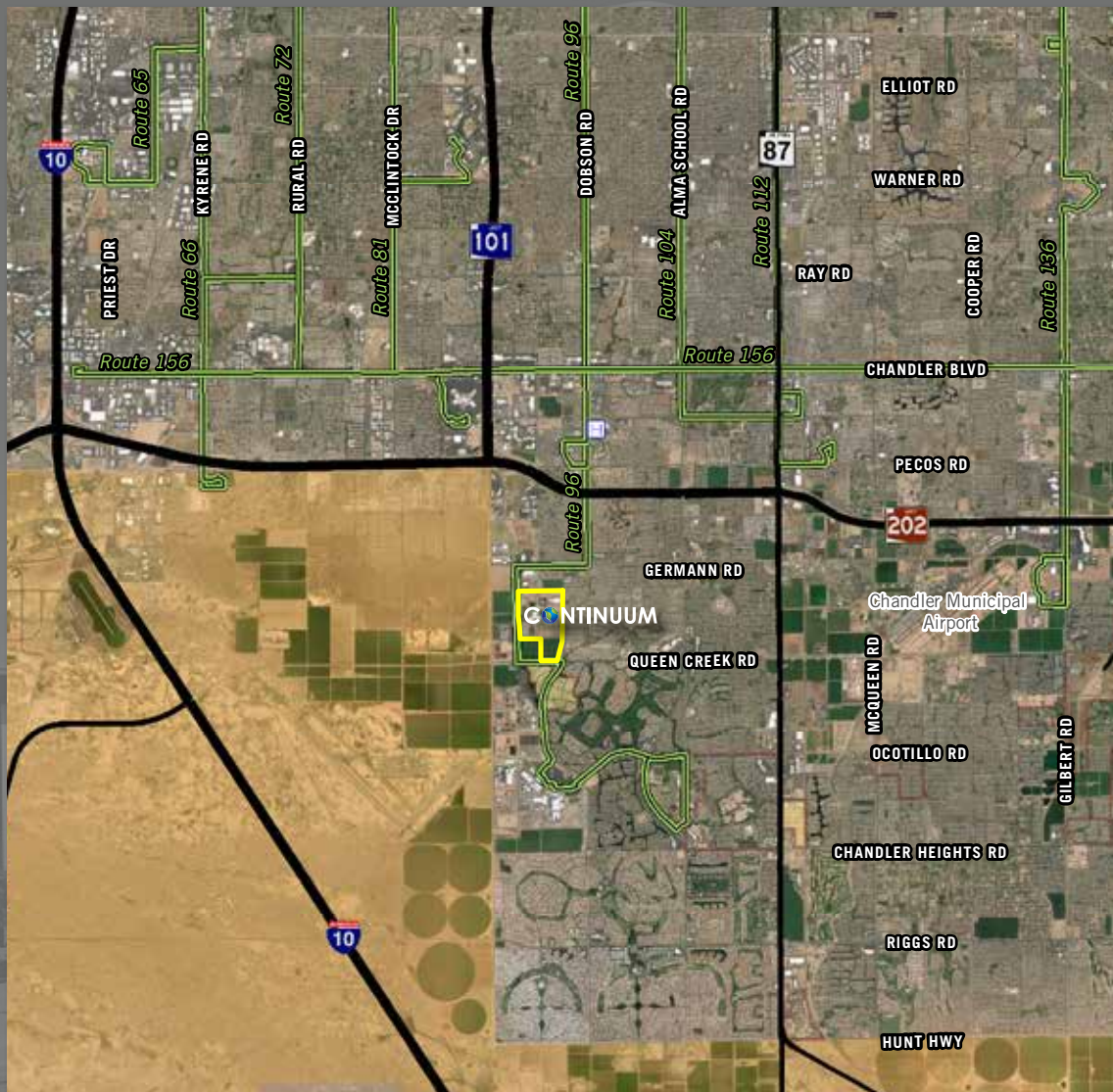




BUS ROUTES



- ROUTE 62**
HARDY
- ROUTE 65**
MILL/KYRENE
- ROUTE 72**
SCOTTSDALE/RURAL
- ROUTE 81**
HAYDEN/
MCCLINTOCK
- ROUTE 96**
DOBSON
- ROUTE 104**
ALMA SCHOOL
- ROUTE 112**
COUNTRY CLUB/
ARIZONA AVE
- ROUTE 136**
GILBERT RD
- ROUTE 156**
CHANDLER BLVD/
WILLIAMS FIELD RD

Jeff Wentworth
Executive Managing Director
+1 602 224 4423
jeff.wentworth@cushwake.com

Sean Spellman
Senior Vice President
+1 602 224 4441
sean.spellman@cushwake.com

Mike Beall
Executive Managing Director
+1 602 224 4426
mike.beall@cushwake.com

Chris Walker
Vice President
+1 602 224 4466
chris.walker@cushwake.com